

SCREEN DRYING CABINET

DRI-VAULT

CE CERTIFIED
BY CERTIFICATION EXPERTS
THE NETHERLANDS

Dry your screens securely in the 10 or 24 screen Dri-Vault. Variable heat and powerful filtered air flow can have your screens ready for exposure, in as little as **20 MINUTES! ****



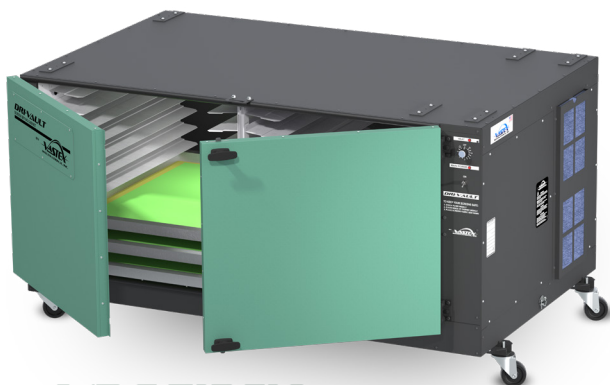
VDC-253610

Holds (10) 25" X 36"
(63 X 91cm) screens



VDC-253624

Holds (24) 25" X 36"
(63 X 91cm) screens



VDC-513610

Holds (20) 25" X 36" (63 X 91cm) screens
or (10) 51" X 36" (130 X 91cm) screens

HEAVY DUTY CAPACITY

Industrial stainless steel finned heater(s)
Holds ten (10) or twenty four (24) 25" x 36" (63.6 x 91.4 cm) screens of any type

POWERFUL

One (1) 177 CFM (5 CMM) air flow blower or
Two (2) 177 CFM (5 CMM) air flow blowers

CONSISTENT

Pressurized cabin with positive air flow keeps out contaminants even if an air leak occurs

EFFECTIVE

Screens sit horizontal on removable shelves (angled to provide edge contact only)

SECURE

One (1) sealed latching door 10 screen or two (2) individually sealed latching doors on the 24 screen unit

CONTROL

10 and 20 screen cabinet has Hi-Low heat adjustment
OR the 24 screen cabinet has breaker on/off switch, pilot light, digital temperature control, both have ability to run air only or variable heat.

FAST EFFICIENT PRECISE EASY

Dries emulsion as quickly as 20 minutes**
4" (10 cm) exhaust duct for contaminated air removal
Light tight heavy duty double wall
Simple to clean or replace filtered air intake

Options

- Stainless steel shelves for rustproof drying
- 240 Volt (standard on 24 screen cabinet)
- Expanded Depth for MHM style screens with pins (10 & 24 screen cabinets)
- Digital Temperature Controller for 10 screen Dri-Vaults

Exposure units can be mounted to 10 and 20 screen drying cabinets to save space.



DriVault_1025

**Drying times will vary. Humidity, thickness and type of emulsion used, and size of screens are factors in Dri-Vault curing time.



LED Exposing Units

Technical Specifications



MADE IN U.S.A.

	E20-2024	E200-2128	E200-2331-HO	E2-2536	E2-5236
Defect Warranty	2 Year	2 Year	2 Year	2 Year	2 Year
Light Bar Warranty	5 Year	5 Year	5 Year	5 Year	5 Year
Maximum Screen Size	20" x 24" (51 x 61 cm)	21" x 28" (53 x 71 cm)	23" x 31" (60 x 80 cm)	25" x 36" (63 x 91 cm)	52" x 36" (132 x 91 cm) or (2) 25" x 36" (63 x 91 cm)
Image Area	12" x 15" (31 x 38 cm)	15" x 18" (38 x 45 cm)	16" x 33" (58 x 83 cm)	E2 - 24" x 36" (61 x 91 cm)	E2 - 46" x 36" (116 x 91 cm)
UV Source	Qty. (2) 15" (38 cm) VLB-15 LED light bars	Qty. (4) 15" (38 cm) VLB-15 LED light bars	Qty. (4) 30" (76 cm) VLB-30 LED light bars	Qty. (6) 30" (76 cm) VLB-HO-30 LED light bars	Qty. (12) 30" (76 cm) VLB-HO-30 LED light bars
Screen Vacuum/Compression Source	Pressure Pad	1/16 HP Pump 24 hg Max	1/16 HP Pump 24 hg Max	1/2 HP Ring Blower 60 CFM	1/2 HP Ring Blower 60 CFM
Power & Plug Spec International Available	120V 2A NEMA 5-15P plug 240V 1.5A NEMA 6-15P plug	120V 3.5A NEMA 5-15P plug 240V 2A NEMA 6-15P plug	120V / 60 HZ / 3.5A NEMA 5-15P 240V / 50/60 HZ / 2A NEMA 6-15P	120V / 60 HZ / 11A NEMA 5-15P 240V / 50/60 HZ / 5A NEMA 6-15P	120V / 60 HZ / 14A NEMA 5-20P 240V / 50/60 HZ / 7A NEMA 6-15P
Overall Depth x Width x Height	With Pressure Pad 26.1" x 21.5" x 8.4" (67 x 55 x 22 cm) Without Pressure Pad 26.1" x 21.5" x 6.6" (67 x 55 x 17 cm)	Lid Closed 39.1" x 33.3" x 14.1" (99.3 x 83.8 x 35.8 cm) Lid Open 39.1" x 33.3" x 35.6" (99.3 x 83.8 x 90.4 cm)	Lid Closed 43 x 36.3 x 14.1" (109.2 x 92.2 x 35.8 cm) Lid Open 43 x 36.3 x 35.6" (109.2 x 92.2 x 90.4 cm)	Lid Closed 53.2" x 39.2" x 44.5" (135.1 x 99.6 x 113 cm) Lid Open 53.2" x 39.2" x 69" (135.1 x 99.6 x 175.3 cm)	Lid Closed 66.2" x 53.6" x 44.5" (168.2 x 136.2 x 113.1 cm) Lid Open 66.2" x 53.6" x 69" (168.2 x 136.2 x 187.3 cm)
Overall Weight - Uncrated	30 lbs (13.6 kg) w/o glass 45 lbs (20.4 kg) w/ glass	100 lbs (45.4 kg)	180 lbs (81.6 kg)	230 lbs (104.4 kg)	346 lbs (157 kg)
Shipping Weight*	33 lbs (15 kg) Glass not included (call for shipping details)	223 lbs (101 kg) w/ Utility Cart (UC-1000) 483 lbs (219 kg)	386 lbs (175 kg) w/ drying cabinet VDC-253610 570 lbs (259 kg)	430 lbs (195 kg) w/ drying cabinet VDC-253610 579 lbs (263 kg)	699 lbs (318 kg) w/ drying cabinet VDC-523610 895 lbs (406 kg)
Shipping Dimensions*	31" x 25" x 13" (79 x 64 x 33 cm) Glass not included (call for shipping details)	43" x 43" x 17" (109 x 109 x 43 cm) w/ Utility Cart (UC-1000) 43" x 43" x 35" (109 x 109 x 89 cm)	48" x 45" x 20" (122 x 114.3 x 51 cm) w/ drying cabinet VDC-253610 49" x 45" x 38" (124 x 114 x 97 cm)	49" x 45" x 49" (125 x 114 x 125 cm) w/ drying cabinet VDC-253610 49" x 45" x 49" (125 x 114 x 125 cm)	74" x 59" x 49" (188 x 149.9 x 125 cm) w/ drying cabinet VDC-523610 74" x 59" x 49" (188 x 149.9 x 125 cm)

Drying Cabinets

Technical Specifications



MADE IN U.S.A.

	Dri-Cab	Dri-Vault - Drying Cabinets		
	VDC-2331	VDC-253610	VDC-253624 (-DHO**)	VDC-513610 (-DHO**)
Defect Warranty	2 Year	2 Year	2 Year	2 Year
Maximum # of Screens	10 @ maximum size	10 @ maximum size	24 @ maximum size	(10) @ 51" x 36" / (20) @ 25" x 36"
Maximum Screen Size	23" x 31" x 1.625" (58.4 x 78.7 x 4.12 cm)	25" x 36" x 1.625" (63.5 x 91.4 x 4.12 cm)	25" x 36" x 1.625" (63.5 x 91.4 x 5.7 cm)	(10 screens) @ 51" x 36" (20 screens) @ 25" x 36"
Smallest Screen Width	18" (46 cm)	18" (46 cm)	18" (46 cm)	No minimum due to adjustable center tree
Blower (Free Air)	113 CFM (3.2 CMM)	177 CFM (5 cmm) <u>120v</u> or 290 CFM (8.2cmm) <u>240volt</u>	580 CFM (16.4 CMM)	290 CFM (8.2 CMM)
Overall Depth x Width x Height	36" x 26" x 32" (91 x 66 x 81 cm)	39.5" x 34.75" x 32"	39.5" x 34.75" x 81"	39.5" x 62.5" x 32.3"
Heater Wattage	N/A	1,000 Watts 120 Volts or 2,000 Watts 240 Volts	3,000 Watts 240 Volts or 4,000 Walls @ 240 Volts (-DHO)	2,000 Watts @ 240 Volts or 3,000 Walls @ 240 Volts (-DHO)
Power & Plug Spec International Available	120V / 1A / 1 Ph. / 60 HZ / NEMA 5-15P plug or 240V / 1A / 1 Ph. / 50/60 HZ / NEMA 6-15P plug	120V / 9A / 1 Ph. / 60 HZ / NEMA 5-15P plug or 240V / 9A / 1 Ph. / 50/60 HZ / NEMA 6-15P plug	240V / 13A / 1 Ph. / 50/60 HZ / NEMA 6-20P plug or 240V / 17A / 1 Ph. / 50/60 HZ / Optional NEMA 6-30LP (-DHO)	240V / 9A / 1 Ph. / 50/60 HZ / NEMA 6-15P plug or 240V / 13A / 1 Ph. / 50/60 HZ / NEMA 6-20P (-DHO)
Shipping Weight (Assembled)*	212 lbs (55.3 kg)	367 lbs (166.5 kg)	670 lbs (303 kg)	573 lbs (277 kg)
Shipping Dimensions (Assembled)*	43" x 35" x 40" (110 x 89 x 102 cm)	43" x 43" x 48" (109 x 109 x 122 cm)	43" x 43" x 84" (109 x 109 x 213 cm)	69" x 48" x 48" (175.3 x 122 x 122 cm)
Shipping Weight (Unassembled)*	Box # 1 - 121 lbs (55 kg) Box # 2 - 15 lbs (6.8 kg)	N/A	N/A	N/A
Shipping Dimensions (Unassembled)*	Box # 1 - 43" x 29" x 9" (110 x 74 x 23 cm) Box # 2 - 34" x 29" x 8" (87 x 74 x 21 cm)	N/A	N/A	N/A

1 in = 2.54 cm
1 lb = 0.454 kg

*All shipping weights and dimensions are for continental US shipping only. Call for other shipping specifications. Ex-works from Bethlehem, PA.

**DHO models include digital temperature control and high output heaters.